

LOCKHEED WEST SEATTLE REMEDIATION SITE

Cleanup project is moving ahead!



1900s - Tidelands filled to create marine industrial infrastructure, including uplands and deep draft navigation channels.

1900-1910 - Puget Sound Bridge and Dredge Company begins shipyard operations at "Yard 1" on west side of Harbor Island.

1940s - Puget Sound Bridge and Dredging Company expands, beginning operation at "Yard 2" on the West side of the West Waterway. Both Yards 1 and 2 used for shipbuilding, maintenance, and repair.

1959 - Lockheed Corporation purchases the Yard 1 and Yard 2 operations and continues shipbuilding, maintenance, and repair at both sites.

1987 - Lockheed closes Yard One and Yard Two.

1989 - Lockheed sells Yard Two to Port of Seattle, for redevelopment and expansion of adjacent Terminal 5 container cargo facility.

1997 - Lockheed sells Yard One to Port of Seattle, as an element of port's Terminal 18 redevelopment project.

2007 - U.S. Environmental Protection Agency (USEPA) establishes the marine portion of Yard Two as a Superfund Site, calling it "Lockheed West Seattle".

2008 - Lockheed Martin prepares a Remedial Investigation/ Feasibility Study (RI/FS) Work Plan; USEPA approves the work plan.

2012 - April: RI/FS completed.
2012 - July: USEPA issues proposed plan.

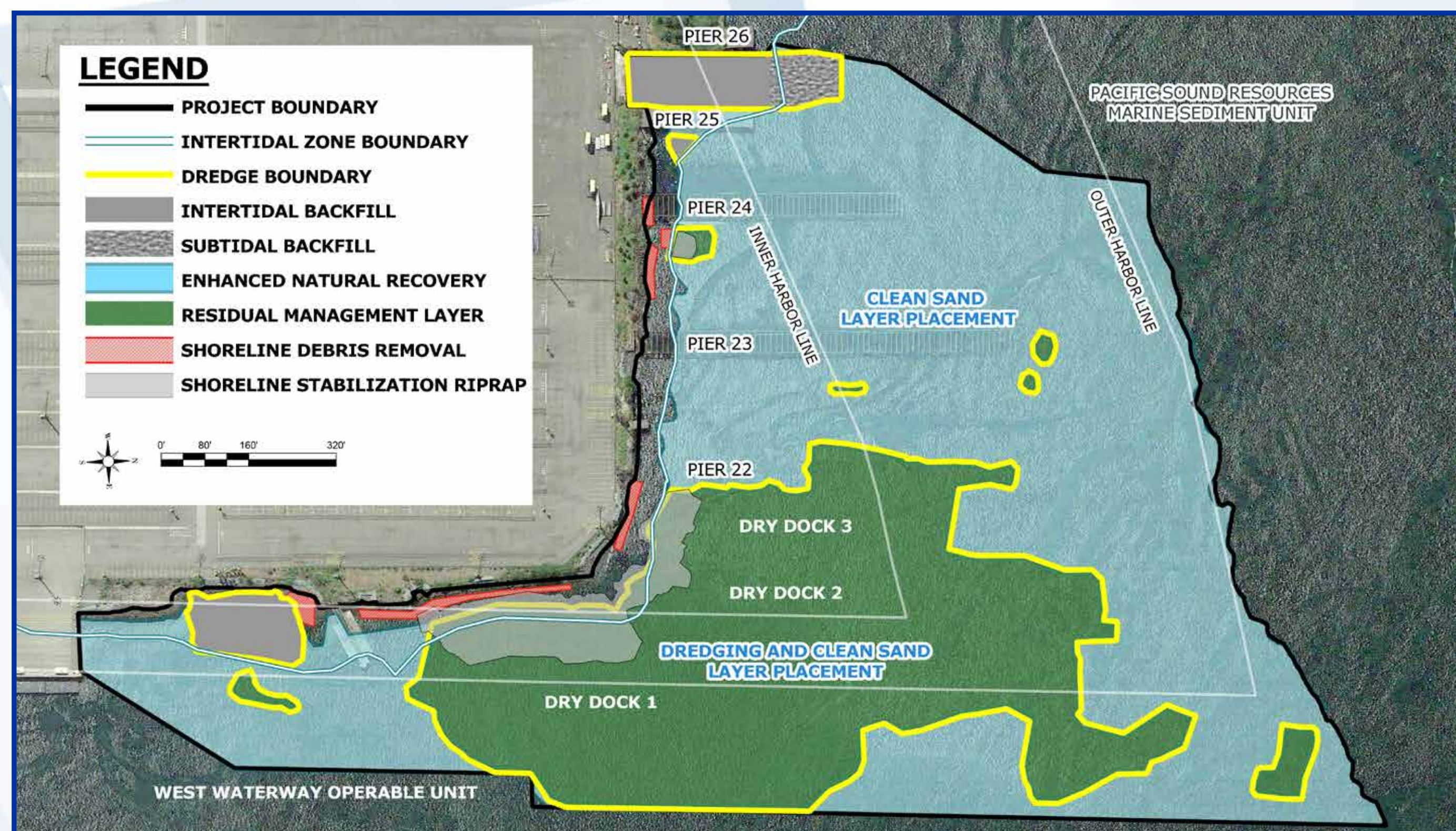
2013 - August: USEPA issues Record of Decision.

2015 - March: USEPA issues Unilateral Agreement Order for Remedial Design/Remedial Action.

2015 Nov - 2016 Feb: Pre-design investigation underway.

2017 - Feb: 30% Design remedy under development.

2018 - June: Final Design.
2018 - Aug: Project Begins.
2019: Project Completion.



Lockheed West Seattle Cleanup Work

Lockheed Martin retains responsibility for cleaning up sediments at both former sites Yards 1 and 2. Contaminants include polychlorinated biphenyls (PCBs), polycyclic aromatic hydrocarbons (PAHs), tributyltin (a marine-paint additive), and metals. About 100,000 cubic yards of sediments will be excavated from approximately 15 acres of the 40-acre aquatic site. The dredged materials will be taken to a permitted landfill for disposal. A thin layer of clean material will be placed over dredged areas to manage any residual contaminants. The dredged area in the ship way will be backfilled to grade. Also, a thin layer of clean material will be placed over the remaining area within the site.



COMMUNITY OUTREACH - CONTACT INFORMATION

Lockheed Martin has communicated regularly with the community as part of a government agency and industry team that includes the corporation, USEPA and numerous state and federal agencies.

The Muckleshoot and Suquamish Indian Tribes, which have usual and accustomed fishing area rights, have been consulted at key points during the cleanup.

Project updates and additional information can be found on Lockheed Martin's website.

 Piper Peterson
USEPA Site Manager
peterson.piper@epa.gov
206.553.4951

 Meghan Macdonald, Manager, Media Relations
Lockheed Martin Corporation
6801 Rockledge Dr., Bethesda, MD 20817
800.449.4486
www.lockheedmartin.com/seattle



Today - Harbor Island is home to a container shipping facility (Terminal 18), Vigor Industrial (formerly Todd Shipyards) and several large scale petroleum tank farms. Terminal 5, also a container shipping facility, operates on the upland property adjacent to the Lockheed West Seattle site.

This informational sign is provided in collaboration with USEPA Region 10 and the Port of Seattle.