

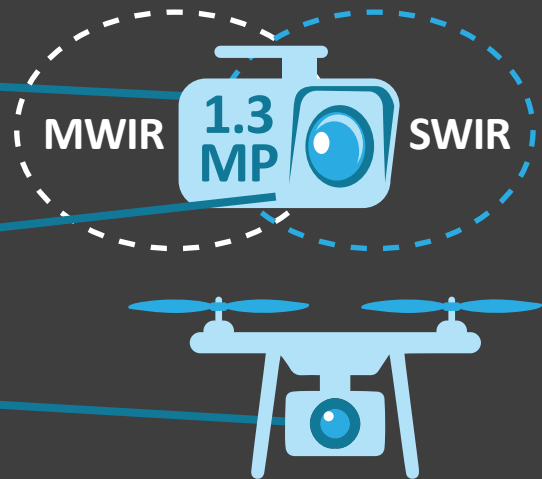
DIGITAL DUAL-BAND IR CAMERA CORE

INDUSTRY'S FIRST MICRO MW/SW CAMERA CORE
WITH HIGH-SPEED, HI-DEF PERFORMANCE

Offers mid- and short-wave IR in footprint of single-band camera

Supports pilotage, threat warning and targeting

Brings big-platform sensor performance to tiny ones



SANTA BARBARA FOCALPLANE: ENGINEERING THE FUTURE OF IR

96,000 Square-foot Facility

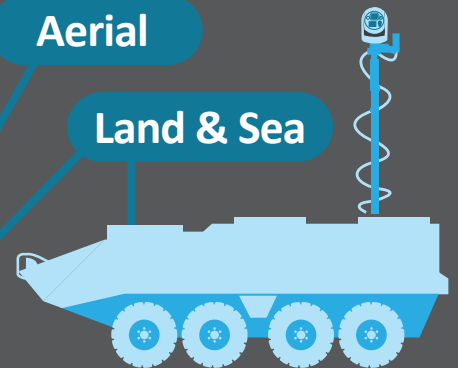
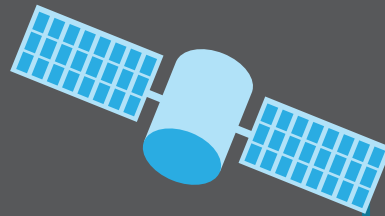
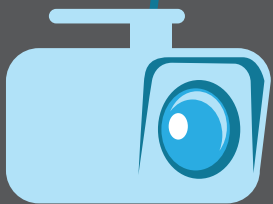
Camera Cores

Imaging Infrared Systems

Space

Aerial

Land & Sea



For more information visit:
www.lockheedmartin.com

LOCKHEED MARTIN

